

## Curriculum Intent:



**History** Children will gain clear knowledge and understanding of Britain's past and that of the wider world, exploring significant events in history as well as acknowledging how these have impacted on society today.

Subject	Term	Unit	Year
History	Spring	The Great Fire of London	Year 2

Prior knowledge Building on knowledge and skills	National Curriculum Focus
<p>Understand the significance Florence Nightingale and Mary Seacole had on modern nursing .</p> <p>Know what the NHS is.</p> <p>Understand how people accessed medical treatment before the NHS.</p> <p>Describe how a local doctor Dr Isaiah Baker helped the poor people of Hurst Hill before the NHS was invented.</p> <p>Describe the affects of an event in living memory – Covid 19 pandemic and how it affected the lives of ordinary people.</p> <p>Able to place events about history , beyond living memory, of flight on a time line. Able to observe and handle evidence from the past , asking questions.</p> <p>Say how Neil Armstrong and Amelia Earhart contributed to national and international achievements.</p>	<p>To investigate and learn about events beyond living memory eg The Great Fire of London</p> <p>To explain similarities and differences between how we live today and in the past.</p> <p>To ask and answer questions, choosing and using parts of stories and other sources to show that they know and understand key features of events.</p> <p>To understand some of the ways in which we find out about the past and identify different ways in which it is represented.</p> <p>To investigate the lives of significant individuals in the past who have contributed to national and international achievements. Some should be used to compare aspects of life in different periods.eg Samuel Pepys .</p>

<b>What?</b>	To know when and where the fire started. Know why the fire spread quickly e.g thatched roof and wooden/straw buildings. They were also close together. Understand that the weather played a part too. Know how the fire was put out. Explain
--------------	--

	<p>what impact King Charles decision had on the prevention of the fire spreading. Explain when and how the fire was finally stopped. Know why is Samuel Pepys is an important person in history e.g His eyewitness account is the source of our knowledge about the Great Fire and other key events in English history such as the Plague and King Charles II coronation. Explain what happened after the fire and the measures that were put in place e.g homeless so they moved away. Some people slept in tents around the Tower of London.</p>
<b>Why?</b>	<p>Consider what impact this had on today's society e.g an organised fire brigade was established and water engines were designed that gave a continuous stream of water when pumped.</p> <p>How London and how buildings were built changed . Sir Christopher Wren, architect (link to Art NC), was given the job of redesigning London, including a new St. Paul's Cathedral.</p>
<b>How?</b>	<p>Through a range of artefacts and extracts from Samuel Pepys diary .</p> <p>Through immersive drama experience "Now Press Play " The Great Fire of London."</p> <p>Through music singing songs about retelling the events .</p> <p>Paintings and pictures , maps of London in 1666.</p>

<b>Key vocabulary</b>			
<b>Pudding Lane</b>	The street where the fire started.	<b>River Thames</b>	The river that runs through London where many people escaped to.
<b>Tower of London</b>	Where King Charles II lived in 1666. Was not damaged by the fire because the fire was stopped before it reached the place.	<b>Bakery</b>	A shop where bread and cakes are made.
<b>Eyewitness</b>	A person who saw an event and can therefore describe it.	<b>Fire break</b>	When buildings are destroyed to make a break so the fire can't spread to the next building.

<b>Fire hooks</b>	Giant hooks used to pull houses down.	<b>Flammable</b>	Something that burns easily.
<b>Leather bucket</b>	Leather is a material and was what buckets were made from before plastic was invented.	<b>Past</b>	Something that has already happened.
<b>Thatched roof</b>	A roof made of dry vegetation such as straw and reeds.	<b>Samuel Pepys</b>	Aman who lived at the time of The Great Fire of London. He wrote a diary which is how we know so much about the fire.
<b>King Charles II</b>	King of England, Ireland and Scotland from 1660 to 1685.	<b>Thomas Bludworth</b>	The Lord Mayor of London.

### End of Unit Key Questions

1. When and in what city did the fire take place?
2. How did the fire start?
3. Why did the fire spread so quickly?
4. How did the people of London put out the fire? What did they use?
5. Who kept a diary about the Great Fire of London? Why is this an important historical source?
6. What impact did The Great Fire of London have on today's society?
7.
7.

### Key learning

Objective	Learning
Can I identify the year and city the fire	<ul style="list-style-type: none"> <li>• Visit the school time line in the corridor. Find Neil Armstrong, NHS start, Victorians – time of Mary Seacole and Florence Nightingale. Now find "The Great Fire of London"</li> <li>• Discuss its position on the line because it is beyond living memory. A long time before Florence Nightingale and Mary Seacole.</li> <li>• Explain King Charles 11 was on King of England Scotland .</li> <li>• The city where it took place was London . Review prior learning Year 1 geography capital city of UK. – Find on in First Atlas .Page 9.</li> </ul>

took place?

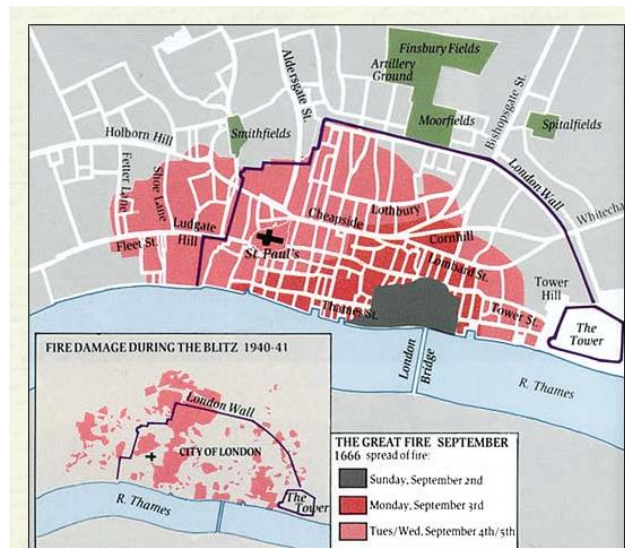
Can I explain how and why the fire started?

The Great Fire of London started on the morning of Sunday 2<sup>nd</sup> September 1666 in a baker's shop on Pudding Lane. The baker was Thomas Farriner. Look at old London map compare today and 1666. Find Pudding Lane on the map. Find Tower of London – this is where the King lived. The River Thames. Tower Bridge, St Pauls Cathedral. A fire for baking had not been put out. The house was made of wood and had a thatched roof which set alight quickly. The fire spread through the bakery and soon towards the other buildings. The Great Fire had begun.

Watch first video on

<https://www.bbc.co.uk/bitesize/topics/zdyhn9q/articles/z4msn9q>

Can I explain where the fire spread to and why it spread so quickly?



- At this time, most London houses were of wood and pitch construction, dangerously flammable, and it did not take long for the fire to expand. The fire leapt to the hay and feed piles on the yard of the Star Inn at Fish Street Hill, and spread to the Inn. The strong wind that blew that night sent sparks that next ignited the Church of St. Margaret, and then spread to Thames Street, with its riverside warehouses and wharves filled with food for the flames: hemp, oil, tallow, hay, timber, coal and spirits along with other combustibles. The citizen firefighting brigades had little success in containing the fire with their buckets of water from the river. By eight o'clock in the morning, the fire had spread halfway across London Bridge. The only thing that stopped the fire from spreading to Southwark, on the other side of the river, was the gap that had been caused by the fire of 1633.

- Compare house construction now and in 1666. What were houses made of in 1666. How were the streets laid out ?  
What are houses made of today? How are streets laid out?

In 1666, homes arched over the street below, almost touching in places, and the city was buzzing with people. Lots of animals lived London too – there were no cars, buses or lorries back then – so as well as houses, the city was full of sheds and yards packed high with flammable hay and straw.

Following a long, dry summer the city was suffering a drought. Water was scarce and the wooden houses had dried out, making them easier to burn... it was a recipe for disaster



Look at a painting painted after the time by an eye witness what can they see?

Can I describe how the people of London fight the fire

**In 1666 London did not have a fire brigade . On the 3<sup>rd</sup> September the Duke Of York was in charge of fighting the fire.**

**Watch <https://www.london-fire.gov.uk/museum/history-and-stories/the-great-fire-of-london/#:~:text=Did%20you%20know%3F,fire%20%E2%80%93%20but%20had%20little%20effect>.**

**Watch for early fire fighting methods .water squirts, leather buckets and fire hooks to pull down the starw roofs.**

and how was it eventually put out?

The standard procedure to stop a fire from spreading had always been to destroy the houses on the path of the flames, creating “fire-breaks”, to deprive a fire from fuel. Lord Mayor Bludworth, however, was hesitant, worrying about the cost of rebuilding. By the time a Royal command came down, carried by Samuel Pepys, the fire was too out of control to stop. The Trained Bands of London were called in to demolish houses by gunpowder, but often the rubble was too much to be cleared before the fire was at hand, and only eased the fire's way onward. The fire blazed unchecked for another three days, until it halted near Temple Church. Then, it suddenly sprang to life again, continuing towards Westminster. The Duke of York (later King James II) had the presence of mind to order the Paper House demolished to create a fire break, and the fire finally died down.

Can I explain why Samuel Pepys' diary an important historical source?



Samuel Pepys (1633-1703) was a famous diarist and essay writer . Much of what we know about the period comes from Pepys (pronounced Peeps) diary. This is an eye witness account of The Great Fire of London. Discuss the advantages and disadvantages of using an eye witness account.

A diary is a place where a person records their thoughts and feelings and things that happened to them.

Samuel Pepys was an important person at the time and was a member of Parliament who helped the king run the country. He wrote his diary in type shorthand, code so even his wife Elizabeth could not read it . From the diary we know about King Charles 11 coronation in 1661 and also about a horrible illness which spread through London and the whole country called the Plague. It was spread by rats and no one then understood how to cure it or how it spread.

He also recorded the events of The Great Fire of London . We know how people felt and how people fought the fire by reading his diary.

He was the person who met with the King and his brother James Duke of York to say that the only way to stop the fire was to pull down the houses to make a fire break.

He also described how people escaped from the fire by getting on boats on the River Thames and how they tried to save valuable items by

	<p>burying them in their gardens , He buried wine and some cheese in his garden . This shows how different things were valuable to people in 1666.</p> <p>He describe in his diary the devastation when the fire had been put out and what buildings had been destroyed.</p>
<p>Can I explain the impact that the Great Fire of London had on today's society?</p>	<p><u>Fighting Fires</u></p> <p>The enormous losses suffered after the Great Fire of London led to the establishment of fire insurance, where people paid a fee to an insurance company to insure their property against damage. The first insurance company, called the Fire Office was formed in 1680 by the economist and financial speculator <u>Nicolas Barbon</u>. By 1705 it had changed its name to the Phoenix after the Greek mythological bird that rose from the ashes.</p> <p>To protect the properties of their customers and to reduce their own losses most London insurance companies employed up to 30 Thames watermen to put out fires. However, the term 'fire brigade' was not used until the early 19th century.</p> <p>Metal plaques with the brightly painted emblems of each fire insurance company were placed high up on the buildings of insured properties. As the plaques were made of metal, they were more likely to survive any fire. Their main purpose was to prove that the property was insured in the event of a claim. The height of the plaques prevented people from stealing them and fixing them to their own properties. They also served as advertisements and in the days before street numbering, as direction finders.</p> <p>Each company adopted elaborate and brightly coloured uniforms. This was partly for identification purposes but mostly as a means of publicity. New uniforms were provided each year to coincide with the insurance company's annual meeting day and this was an opportunity to parade their men through the streets in a public procession accompanied by a band of musicians. The custom was later expanded so that firemen gradually took part in many other public processions and became an important part of London civic life.</p> <p>Firefighting equipment remained very basic but included buckets, axes and preventers which were similar to boat hooks between 8 to</p>

15 feet long. The preventers were used for tasks such as pulling down burning embers. These are sometimes referred to as fire hooks

Fire engines were used by the insurance brigades from the early 1700s although not in great numbers.

### .Rebuilding and planning London

London was in ruins and around 65,000 people had lost their homes.

The devastation caused by the fire led to a chance to re plan and build London learning from the mistakes that had caused the fire to spread.

The King gave a royal proclamation put a stop to construction until new regulations had been ushered in.

The 1667 Rebuilding Act aimed to eradicate risks which had helped the fire take hold, including restrictions on upper floors of houses no longer being permitted to jut out over the floor below.

Importantly, building materials also changed. The 1667 act stated: "No man whatsoever shall presume to erect any house or building, whether great or small, but of brick or stone."

Anyone found to be flouting the new rules would be punished by having their house pulled down.

Not only were houses made of wood in 1666, but so were water pipes, and much of the water supply infrastructure was destroyed. There were no access points to get to the water without stopping the flow, and in the panic to try and extinguish the fire the pipes were broken and the water drained away.

Steps were taken to rectify this and make the water easier to access - essentially the beginnings of a fire hydrant system.

### Water supply to fight fires.

The Fire Prevention Regulations, printed by the City of London in 1668 stated: "That plugs be put into the pipes in the most convenient places or every street, whereof all inhabitants may take notice, that breaking of the pipes in disorderly manner maybe avoided."

### New cathedral still in use today .

The architect Sir Christopher Wren was given the job of planning the new St Paul's cathedral.

He designed it clad with Portland stone and a dome to replace the old spire.

### The Great Fire of London Monument.

Sir Christopher Wren also designed The Great Fire of London Memorial which you can still visit today.

It was built between 1671 and 1677. The monument is 61 metres high and exactly 61 metres from Pudding Lane the start of the fire.. Tourists can climb steps to the top of the tower and see over London.



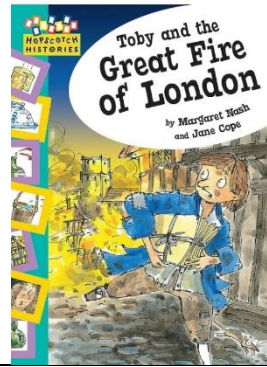
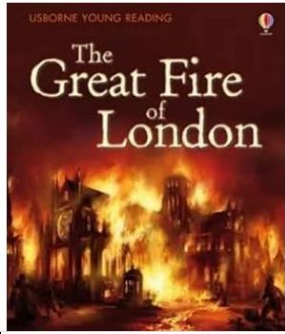
### Websites

<https://www.bbc.co.uk/bitesize/topics/zdyhn9q/articles/z4msn9q>

<https://www.london-fire.gov.uk/museum/history-and-stories/the-great-fire-of-london/#:~:text=Did%20you%20know%3F,fire%20%E2%80%93%20but%20had%20little%20effect.>

<https://www.bbc.co.uk/news/uk-england-london-36774166>

### Recommended Reads



## Golden Thread

How individuals/events in history have changed our national and personal lives, both locally and nationally.

## Experience Day (Trip / visitor )



Great Fire of  
London